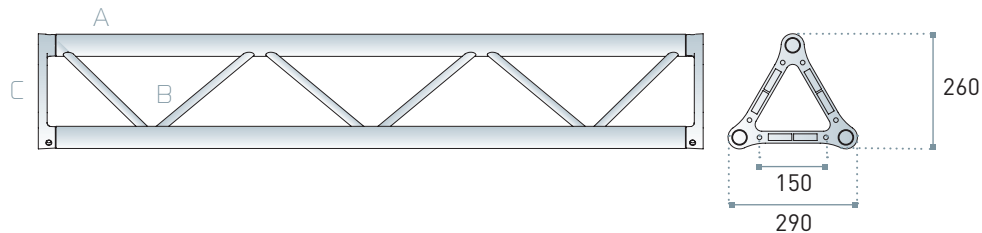




TX30SA ANTI-TORSION

Triangular section aluminium truss with 29 cm long sides. This is the most popular version of all our triangular trusses. It is manufactured using 6082 aluminium alloy extruded components, with a high load-bearing capacity and twist-resistant strength. The diagonal chords have been re-configured and their diameter changed to improve the aesthetic appearance and increase the overall strength of the truss.



Chords A: extruded tube \varnothing 50x2 mm
EN AW 6082 T6

Diagonals B: extruded tube \varnothing 18 x 2 mm
EN AW 6082 T6

Ends C: aluminium casting plate
EN AC 42200 T6

Connection systems

TXFC: quick-fit kit

TXSM10: bolt connection kit

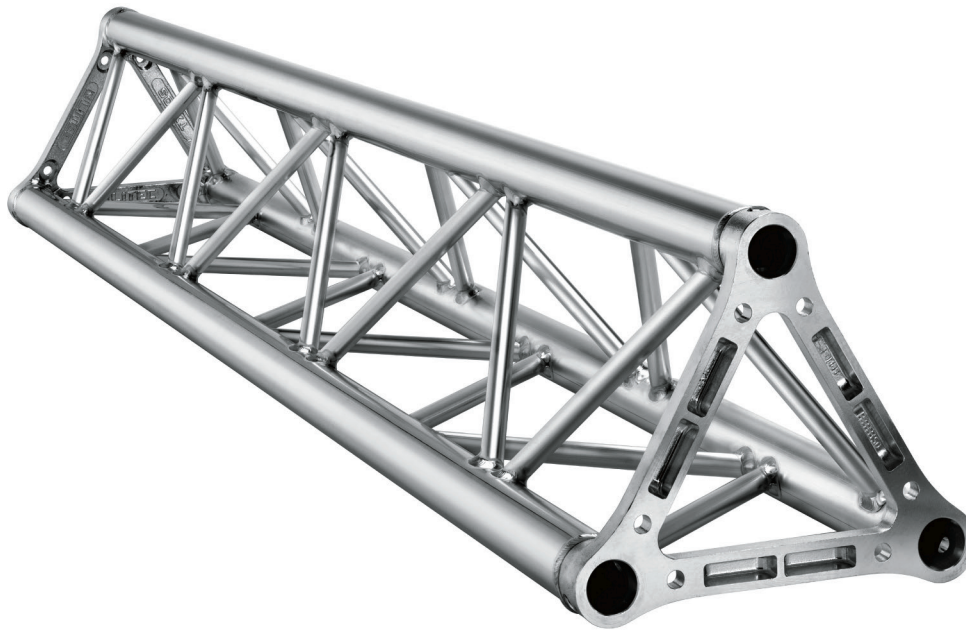
LINEAR ELEMENTS

code	cm	kg
TX30S010M5	29x26x10.5	2.3
TX30S021	29x26x21	2.6
TX30S025	29x26x25	2.7
TX30S050	29x26x50	3.7
TX30S100	29x26x100	5.4
TX30S150	29x26x150	7.2
TX30S200	29x26x200	9.0
TX30S250	29x26x250	10.7
TX30S300	29x26x300	12.5
TX30S350	29x26x350	14.2
TX30S400	29x26x400	16.0

CORNERS AND FITTINGS

code	cm	kg
TX30SL2045	100x100x26	6.9
TX30SL2045I	100x100x29	6.9
TX30SL2060	100x100x26	7.0
TX30SL2060I	100x100x29	7.1
TX30SL2090	50x50x26	4.4
TX30SL2090I	50x50x29	4.5
TX30SL2120	50x50x26	4.6
TX30SL2120I	50x50x29	4.9
TX30SL2135	50x50x26	4.9
TX30SL2135I	50x50x29	5.0
TX30SL3L	50x50x50	6.5
TX30SL3LU	50x50x50	6.3
TX30SL3R	50x50x50	6.4
TX30SL3RU	50x50x50	6.3
TX30ST3	50x50x26	5.5
TX30ST3F	29x50x50	5.8
TX30ST3FU	29x50x50	5.5
TX30ST4	50x50x50	7.5
TX30ST4RU	50x50x50	7.8
TX30ST4LU	50x50x50	7.8
TX30SX4	50x50x26	6.2
TX30SX5	50x50x50	8.4
TX30SX5NU	50x50x50	8.6
TX30SX6	50x50x50	9.3





TX305A

LOAD TABLE / SPIGOT CONNECTION

SPAN m	UNIF. DISTRIBUTED LOAD			CENTRE POINT LOAD			THIRD POINT LOAD			QUARTER POINT LOAD			FIFTH POINT LOAD		
	point load kg/m	full load kg	central deflection mm	point load kg	full load kg	central deflection mm	point load kg	full load kg	central deflection mm	point load kg	full load kg	central deflection mm	point load kg	full load kg	central deflection mm
1	2025	2025	0	1306	1306	0	830	1661	0	638	1913	0	506	2025	0
2	919	1837	3	784	784	2	534	1068	2	433	1300	3	338	1351	3
3	418	1253	7	556	556	5	390	779	6	297	891	6	237	948	7
4	236	945	13	427	427	9	305	610	11	225	676	12	181	726	12
5	150	751	20	345	345	15	249	498	18	180	540	18	146	584	19
6	103	618	29	288	288	22	210	419	27	149	447	27	121	486	28
7	74	519	39	245	245	30	179	359	37	127	380	37	104	415	38
8	56	448	51	213	213	40	156	313	49	109	327	48	90	359	50
9	43	387	65	186	186	51	137	274	63	95	284	61	79	314	64
10	34	341	80	164	164	64	121	243	78	84	251	75	69	276	78
11	27	301	97	145	145	78	109	218	96	74	222	91	61	246	96
12	22	267	115	130	130	94	97	194	114	66	198	109	55	219	114
13	18	239	136	116	116	111	87	175	135	59	176	128	49	196	134
14	15	214	157	104	104	130	79	157	158	53	158	149	44	175	156
15	13	189	179	93	93	151	71	142	183	47	140	171	39	157	180
16	10	166	202	83	83	174	64	127	208	42	127	197	35	139	204

CANTILEVER LOAD TABLE / SPIGOT CONNECTION

SPAN m	UNIF. DISTRIBUTED LOAD			CENTRE POINT LOAD	
	q am.- kg/m	q am.- kg	defl.- mm	F am.- kg	defl.- mm
1	649	649	1	391	2
2	192	385	6	213	9
3	89	267	15	143	21
4	50	200	28	105	38
5	31	156	44	81	59
6	21	123	65	64	85

AXIAL LOAD TABLE

H m	AXIAL LOAD
	N am. Kg
3	5399
6	1395
9	624
12	351

Load table has been prepared in accordance with UNI ENV 1999-1-1 (Eurocode 9). When calculating the allowable loads it is assumed that the load is suspended from the bottom chord and the truss is supported from the top chord at each end.

The values shown in the table are the allowable static loads that can be applied to the truss. This is the live load or the payload. The self weight of the truss has been taken into account when calculating the values in the table.

It should be noted that this are idealised loading conditions and the User shall re-analyze the truss for the loading conditions which prevail for the application being considered. The load tables values refer to the use of the truss with the apex down.

TX30SA SYSTEM

To further enhance the standard products, LITEC offers a wide range of corners, connections and accessories useful for many different applications and needs. "Quick connect" or "nult & bolt connect". End-plated trusses allow to use two different systems of connection. The quick-fit system is certainly the most wide-spread and mainly used when the structure is frequently assembled and dismantled. In case of permanent installations, on the other hand, a more economical bolt connection system may be used. Our plate is made in such a way that bolts may be completely inserted so that there are no edges or external protuberances which could damage canvases or other fabrics or which might simply be unaesthetic on certain structures.

TX30SA / CONNECTIONS



KSG
Litetruss aluminium spigot, set of 10



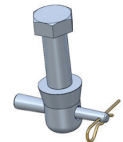
KCP R-spring, set of 100
KSP Steel pin, set of 10



K370
Half truss spigot + 1 steel pin + 1 R-spring (not for Dado)



KSF
Threaded pin, set of 12



KCFS
Kit for vert. connec incl. bolts, spigots and accessories

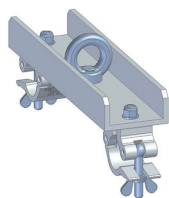


QXFC
Quick connection set

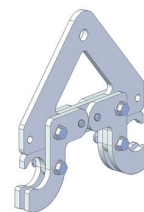
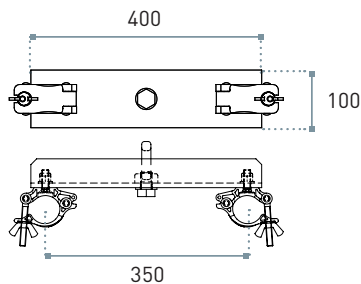


TXSM10
Bolt connection set

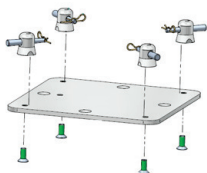
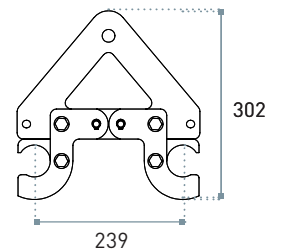
TX30SA / ACCESSORIES



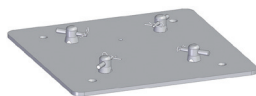
C030
Bar hook for 29 cm. truss



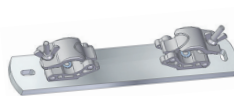
CBT3040
2 points Bridle Hook for 29/40 cm. truss



FP30
Universal 29 cm truss floor plate



FP30M
Universal 29 cm truss large floor plate



C030WB
29 cm wall bracket W/ half couplers

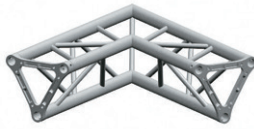


TX30SA / CORNERS & FITTINGS



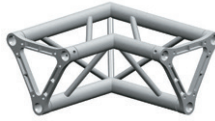
TX30SL2045

ST 29 cm. triangular
2 way 45° corner



TX30SL2060

ST 29 cm. triangular
2 way 60° corner



TX30SL2090

ST 29 cm. triangular
2 way 90° corner



TX30SL2090E

ST 29 cm. triangular
2 ways 90° corner, ext.
vertex



TX30SL2090I

ST 29 cm. triangular
2 way 90° corner, int.
vertex



TX30SL2120

ST 29 cm. triangular
2 way 120° corner



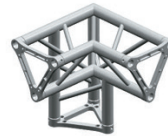
TX30SL2135

ST 29 cm. triangular
2 way 135° corner



TX30SL3L

ST 29 cm. triangular
3 way corner left



TX30SL3R

ST 29 cm. triangular
3 way corner right



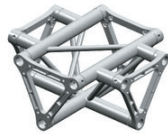
TX30ST3

ST 29 cm. triangular
3 way tee



TX30ST4

ST 29 cm. triangular
4 way tee



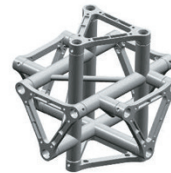
TX30SX4

ST 29 cm. triangular
4 way cross



TX30SX5

ST 29 cm. triangular
5 way cross



TX30SX6

ST 29 cm. triangular
6 way cross