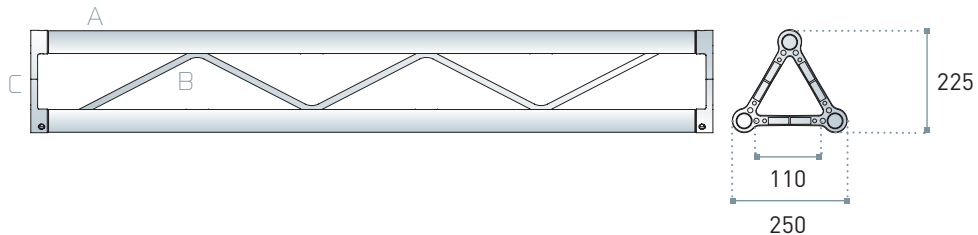




TX25SA ANTI-TORSION

Triangular section aluminium truss with 25 cm long sides. This is the triangular version of the lightest professional structure, yet it is able to guarantee a reasonable loading capacity and span. The internal 14 mm diameter diagonal components are flush which decreases the aesthetic impact of this truss, which may therefore also be used in small areas.



Chords A: extruded tube \varnothing 50x1,5 mm EN AW 6005 T6
Diagonals B: extruded tube \varnothing 14x1,5 mm EN AW 6060 T6
Ends C: aluminium casting plate EN AC 42200 T6
Connection systems TXFC: quick-fit kit TXSM8: bolt connection kit

LINEAR ELEMENTS		
code	cm	kg
TX25S012M5	25x22.5x12.5	1.3
TX25S025	25x22.5x25	1.6
TX25S050	25x22.5x50	2.2
TX25S100	25x22.5x100	3.6
TX25S150	25x22.5x150	4.8
TX25S200	25x22.5x200	5.8
TX25S250	25x22.5x250	7.0
TX25S300	25x22.5x300	8.1
TX25S350	25x22.5x350	9.5
TX25S400	25x22.5x400	10.6

CORNERS AND FITTINGS		
code	cm	kg
TX25SL2045	100x100x22.5	6.8
TX25SL2060	100x100x22.5	7.2
TX25SL2090	50x50x22.5	4.3
TX25SL2090I	50x50x25	3.0
TX25SL2090E	50x50x25	3.0
TX25SL2120	50x50x22.5	3.0
TX25SL2135	50x50x22.5	3.1
TX25SL3L	50x50x50	4.2
TX25SL3LU	50x50x50	4.1
TX25SL3R	50x50x50	4.2
TX25SL3RU	50x50x50	4.1
TX25ST3	50x50x22.5	3.4
TX25ST3F	50x25x50	3.6
TX25ST3FU	50x25x50	3.5
TX25ST4	50x50x50	4.8
TX25ST4RU	50x50x50	4.9
TX25SL3LU	50x50x50	4.9
TX25SX4	50x50x22.5	4.0
TX25SX5	50x50x50	6.1
TX25SX5NU	50x50x50	6.1





TX255A

LOAD TABLE / SPIGOT CONNECTION

SPAN m	UNIF. DISTRIBUTED LOAD			CENTRE POINT LOAD			THIRD POINT LOAD			QUARTER POINT LOAD			FIFTH POINT LOAD		
	point load kg/m	full load kg	central deflection mm	point load kg	full load kg	central deflection mm	point load kg	full load kg	central deflection mm	point load kg	full load kg	central deflection mm	point load kg	full load kg	central deflection mm
1	467	467	0	467	467	0	233	467	0	156	467	0	117	467	0
2	232	464	1	352	352	2	227	455	2	155	464	2	116	464	2
3	154	461	5	260	260	4	174	348	5	140	420	6	113	450	6
4	115	458	12	205	205	8	141	281	10	113	338	11	88	353	11
5	76	381	19	168	168	14	117	234	16	91	273	17	72	287	18
6	53	320	28	141	141	20	99	199	24	76	227	26	60	240	26
7	39	270	39	121	121	28	86	172	34	64	193	35	51	204	36
8	29	231	51	105	105	38	75	150	45	56	167	47	44	178	47
9	22	200	64	92	92	49	66	132	58	48	144	59	39	154	60
10	18	176	80	81	81	61	59	117	73	42	127	74	34	136	75
11	14	154	96	71	71	75	53	105	91	37	111	89	30	121	92
12	11	133	113	63	63	91	47	93	109	33	98	106	27	107	110
13	9	116	131	56	56	109	41	83	129	29	87	126	24	95	130
14	7	104	154	50	50	128	37	74	151	26	78	148	21	83	150

CANTILEVER LOAD TABLE / SPIGOT CONNECTION

SPAN m	UNIFORMLY DISTRIBUTED LOAD			CENTRE POINT LOAD	
	q am.- kg/m	q am.- kg	defl.- mm	F am. - kg	defl.- mm
1	232	232	1	175	2
2	85	171	5	101	8
3	41	123	13	69	20
4	23	93	25	51	35

AXIAL LOAD TABLE

H m	N am. Kg
3	2871
6	744
9	333
12	188

Load table has been prepared in accordance with UNI ENV 1999-1-1 (Eurocode 9). When calculating the allowable loads it is assumed that the load is suspended from the bottom chord and the truss is supported from the top chord at each end.

The values shown in the table are the allowable static loads that can be applied to the truss. This is the live load or the payload. The self weight of the truss has been taken into account when calculating the values in the table.

It should be noted that this is idealised loading conditions and the User shall re-analyze the truss for the loading conditions which prevail for the application being considered.

TX25SA SYSTEM

To further enhance the standard products, LITEC offers a wide range of corners, connections and accessories useful for many different applications and needs. "Quick connect" or "nult & bolt connect". End-plated trusses allow to use two different systems of connection. The quick-fit system is certainly the most wide-spread and mainly used when the structure is frequently assembled and dismantled. In case of permanent installations, on the other hand, a more economical bolt connection system may be used. Our plate is made in such a way that bolts may be completely inserted so that there are no edges or external protuberances which could damage canvases or other fabrics or which might simply be unaesthetic on certain structures.

TX25SA / CONNECTIONS



KSG
Litetruss aluminium spigot, set of 10



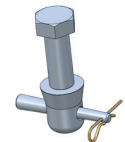
KCP R-spring, set of 100
KSP Steel pin, set of 10



K370
Half truss spigot + 1 steel pin + 1 R-spring (not for Dado)



KSF
Threaded pin, set of 12



KCFS
Kit for vert. connec incl. bolts, spigots and accessories

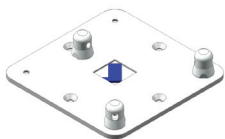


QXFC
Quick connection set

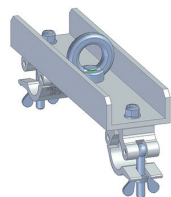


TXSM8
Bolt connection set

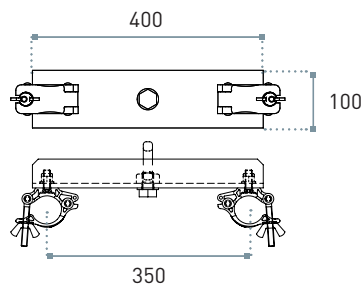
TX25SA / ACCESSORIES



FP25
Universal 25 cm truss floor plate



C025
BAR HOOK for 25 cm truss





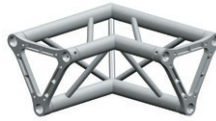
TX25SA / CORNERS & FITTINGS



TX25SL2045
ST 25 cm. triangular
2 way 45° corner



TX25SL2060
ST 25 cm. triangular
2 way 60° corner



TX25SL2090
ST 25 cm. triangular
2 way 90° corner



TX25SL2090E
ST 25 cm. triangular
2 ways 90° corner, ext.
vertex



TX25SL2090I
ST 25 cm. triangular
2 way 90° corner, int.
vertex



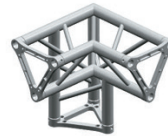
TX25SL2120
ST 25 cm. triangular
2 way 120° corner



TX25SL2135
ST 25 cm. triangular
2 way 135° corner



TX25SL3L
ST 25 cm. triangular
3 way corner left



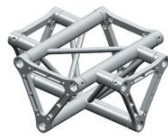
TX25SL3R
ST 25 cm. triangular
3 way corner right



TX25ST3
ST 25 cm. triangular
3 way tee



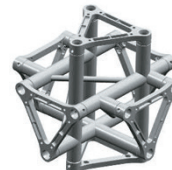
TX25ST4
ST 25 cm. triangular
4 way tee



TX25SX4
ST 25 cm. triangular
4 way cross



TX25SX5
ST 25 cm. triangular
5 way cross



TX25SX6
ST 25 cm. triangular
6 way cross